

G-SERIES  
**COMPACT EXCAVATORS**



JOHN DEERE

**60G**

**JESCO**  
THE DOWN-TO-EARTH EQUIPMENT PEOPLE™



**COMPACT  
OPERATORS**



# 60G SPECIFICATIONS

While general information, pictures, and descriptions are provided, some illustrations and text may include product options and accessories NOT AVAILABLE in all regions, and in some countries products and accessories may require modifications or additions to ensure compliance with the local regulations of those countries.

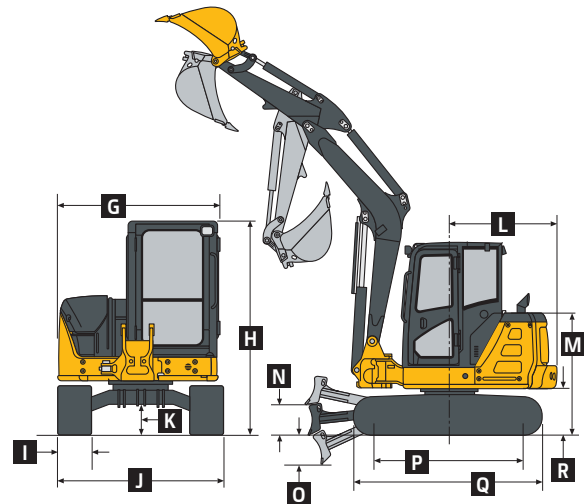
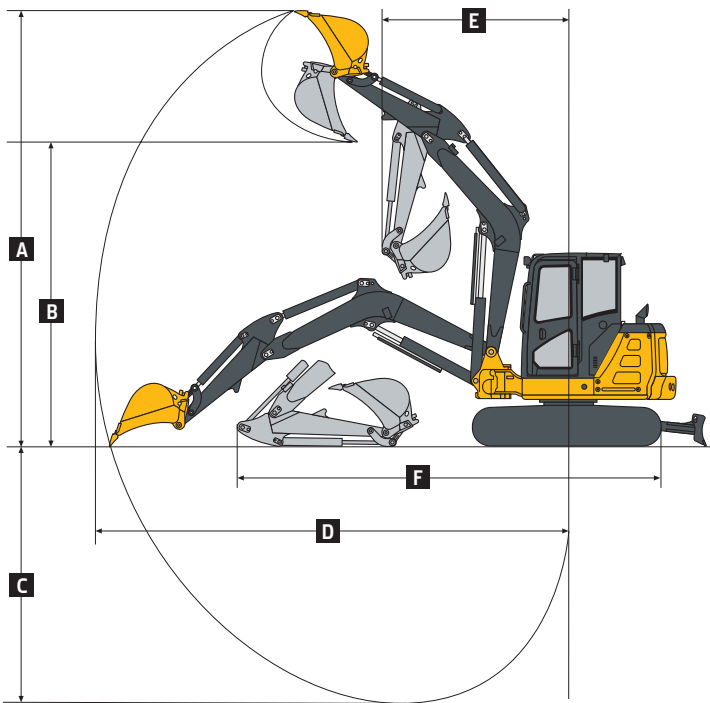
| Engine   |  | 60G   |  |   |  |
|--|--|---|--|---|--|
| Manufacturer and Model   |  | Yanmar 4TNV98C-WHB  |  |   |  |
| Non-Road Emission Standard   |  | EPA Final Tier 4/EU Stage IV  |  |   |  |
| Displacement   |  | 3.32 L (203 cu. in.)  |  |   |  |
| Net Rated Power (ISO 9249)   |  | 39.6 kW (53 hp) at 2,000 rpm  |  |   |  |
| Powertrain   |  |   |  |   |  |
| 2-speed propel with automatic shift; each track independently driven by hydrostatic axial-piston motor connected to 2-stage planetary gear-reduction box |  |   |  |   |  |
| Maximum Travel Speed   |  |   |  |   |  |
| Slow   |  | 2.9 km/h (1.8 mph)  |  |   |  |
| Fast   |  | 4.8 km/h (3.0 mph)  |  |   |  |
| Hydraulics   |  |   |  |   |  |
| Open-center, pilot-operated  |  |   |  |   |  |
| Main Pumps   |  | 1 variable-displacement pump  |  |   |  |
| Maximum Rated Flow   |  | 144 L/m (38.0 gpm)  |  |   |  |
| Auxiliary Maximum Rated Flow   |  | 91.5 L/m (24.2 gpm)   |  |   |  |
| Controls   |  | 2 hydraulic pilot-operated controls for boom, arm, bucket, swing, boom swing, travel, and auxiliary functions |  |   |  |
| Electrical   |  |   |  |   |  |
| Alternator Rating  |  | 55 amp  |  |   |  |
| Work Lights  |  | 2 halogen: 1 mounted on operator's station and 1 mounted on boom  |  |   |  |
| Undercarriage  |  |   |  |   |  |
| Track Shoe Width, Standard Configuration   |  | 400 mm (16 in.)   |  |   |  |
| Ground Pressure  |  | 1500-mm (4 ft. 11 in.)<br>Standard Arm and Canopy   | 1500-mm (4 ft. 11 in.)<br>Standard Arm and Cab | 1850-mm (6 ft. 1 in.)<br>Long Arm* and Canopy                             | 1850-mm (6 ft. 1 in.)<br>Long Arm* and Cab |
| With 400-mm (16 in.) Rubber Track  |  | 34 kPa (4.9 psi)  | 35 kPa (5.1 psi)                               | 36 kPa (5.2 psi)  | 36 kPa (5.2 psi)                           |
| *Add counterweight.  |  |   |  |   |  |
| Upperstructure   |  |   |  |   |  |
| Swing Speed, Right/Left  |  | 9.5 rpm   |  |   |  |
| Maximum Boom Swing Angle   |  |   |  |   |  |
| Left   |  | 80 deg.   |  |   |  |
| Right  |  | 60 deg.   |  |   |  |
| Swing Brake  |  | Spring applied, hydraulically released, automatic, disc type  |  |   |  |
| Serviceability   |  |   |  |   |  |
| Refill Capacities  |  |   |  |   |  |
| Fuel Tank  |  | 120 L (31.7 gal.)   |  |   |  |
| Engine Coolant   |  | 7.7 L (2 gal.)  |  |   |  |
| Engine Oil With Filter   |  | 11.2 L (3 gal.)   |  |   |  |
| Hydraulic Tank   |  | 80 L (21.1 gal.)  |  |   |  |
| Operating Weights  |  |   |  |   |  |
|  |  | 1500-mm (4 ft. 11 in.)<br>Standard Arm, Canopy,<br>and 400-mm (12 in.) Track                                  |  | 1500-mm (4 ft. 11 in.)<br>Standard Arm, Cab, and<br>400-mm (12 in.) Track |  |
|  |  | Rubber  | Steel  | Rubber  | Steel                                      |
| With 745-kg (1,642 lb.) Counterweight; 762-mm (30 in.), 204-kg (450 lb.) Bucket; Full Fuel Tank; and 75-kg (165 lb.) Operator                            |  | 6010 kg (13,250 lb.)  | 6110 kg (13,470 lb.)                           | 6180 kg (13,620 lb.)  | 6280 kg (13,850 lb.)                       |
| Angle Blade  |  | 458 kg (1,010 lb.)  |  | 458 kg (1,010 lb.)  |  |
| Counterweight  |  |   |  |   |  |
| Standard (including hardware)  |  | 745 kg (1,642 lb.)  |  | 745 kg (1,642 lb.)  |  |
| Additional   |  | 270 kg (595 lb.)  |  | 270 kg (595 lb.)  |  |
|  |  | 1850-mm (6 ft. 1 in.)<br>Long Arm, Canopy, and<br>400-mm (12 in.) Track                                       |  | 1850-mm (6 ft. 1 in.)<br>Long Arm, Cab, and<br>400-mm (12 in.) Track      |  |
|  |  | Rubber  | Steel  | Rubber  | Steel                                      |
|  |  | 6040 kg (13,320 lb.)  | 6140 kg (13,540 lb.)                           | 6210 kg (13,690 lb.)  | 6310 kg (13,910 lb.)                       |
| Angle Blade  |  | 458 kg (1,010 lb.)  |  | 458 kg (1,010 lb.)  |  |
| Counterweight  |  |   |  |   |  |
| Standard (including hardware)  |  | 745 kg (1,642 lb.)  |  | 745 kg (1,642 lb.)  |  |
| Additional   |  | 270 kg (595 lb.)  |  | 270 kg (595 lb.)  |  |

# 60G SPECIFICATIONS



While general information, pictures, and descriptions are provided, some illustrations and text may include product options and accessories NOT AVAILABLE in all regions, and in some countries products and accessories may require modifications or additions to ensure compliance with the local regulations of those countries.

| Operating Dimensions   |                           | 60G                                 |
|--|---------------------------|-------------------------------------|
|  |                           | 1500-mm (4 ft. 11 in.) Standard Arm |
|  |                           | 1850-mm (6 ft. 1 in.) Long Arm      |
| A  | Maximum Cutting Height    | 5.96 m (19 ft. 7 in.)               |
| B  | Maximum Dumping Height    | 4.17 m (13 ft. 8 in.)               |
| C  | Maximum Digging Depth     | 3.77 m (12 ft. 4 in.)               |
| D  | Maximum Digging Reach     | 6.23 m (20 ft. 5 in.)               |
| E  | Minimum Boom Swing Radius | 2.45 m (8 ft. 0 in.)                |
| F  | Transport Length          | 5.76 m (18 ft. 11 in.)              |
| Digging Force (ISO), HCM Bucket (788.1-mm [31 in.] tip radius) |                           |                                     |
|  | Arm                       | 31.1 kN (6,990 lb.)                 |
|  | Bucket                    | 41.1 kN (9,240 lb.)                 |
|  |                           | 27.0 kN (6,060 lb.)                 |
|  |                           | 41.1 kN (9,240 lb.)                 |



| Machine Dimensions |                                |                      |  |                      |
|--------------------|--------------------------------|----------------------|--|----------------------|
| <b>G</b>           | Upperstructure Width           | 1.93 m (6 ft. 4 in.) | <b>N</b> Maximum Blade Lift Above Ground | 450 mm (18 in.)      |
| <b>H</b>           | Overall Height (canopy or cab) | 2.54 m (8 ft. 4 in.) | <b>O</b> Maximum Blade Drop Below Ground | 390 mm (15 in.)      |
| <b>I</b>           | Track Width                    | 400 mm (16 in.)      | Blade                                    |                      |
| <b>J</b>           | Undercarriage Width            | 2.00 m (6 ft. 7 in.) | Width                                    | 2.00 m (6 ft. 7 in.) |
| <b>K</b>           | Ground Clearance               | 335 mm (13 in.)      | Height                                   | 420 mm (17 in.)      |
| <b>L</b>           | Tail Swing Radius              |                      | <b>P</b> Sprocket Center to Idler Center | 1.99 m (6 ft. 6 in.) |
|                    | With Standard Counterweight    | 1.30 m (4 ft. 3 in.) | <b>Q</b> Undercarriage Length            | 2.50 m (8 ft. 2 in.) |
|                    | With Additional Counterweight  | 1.41 m (4 ft. 8 in.) | <b>R</b> Counterweight Clearance         | 620 mm (24 in.)      |
| <b>M</b>           | Engine Cover Height            | 1.60 m (5 ft. 3 in.) |  |                      |

## Lift Capacities

**Boldface type** indicates hydraulically limited capacity; lightface type indicates stability-limited capacities, in kg (lb.). All lift capacities are based on ISO 10567 (with power boost). Lifting measurement from center of arm to bucket pin; with 400-mm (16 in.) track shoe and blade on ground; and situated on firm, level, uniform supporting surface. Total load includes weight of cables, hook, etc. Figures do not exceed 87 percent of hydraulic capacities or 75 percent of weight needed to tip machine.

|  | Rubber Track and Standard Counterweight |                        | Steel Track and Standard Counterweight |                        | Rubber Track and Extra Counterweight |                        | Steel Track and Extra Counterweight |                        |
|--|---|------------------------|--|------------------------|--------------------------------------|------------------------|-------------------------------------|------------------------|
|  | Over Front                              | Over Side              | Over Front                             | Over Side              | Over Front                           | Over Side              | Over Front                          | Over Side              |
| <b>Ground Level at 3.0-m (9 ft. 10 in.) Radius</b> |   |                        |  |                        |                                      |                        |                                     |                        |
| 1500-mm (4 ft. 11 in.) Standard Arm and Cab        | <b>3880 kg</b><br>(8,550 lb.)           | 1500 kg<br>(3,310 lb.) | <b>3880 kg</b><br>(8,550 lb.)          | 1520 kg<br>(3,350 lb.) | <b>3880 kg</b><br>(8,550 lb.)        | 1690 kg<br>(3,730 lb.) | <b>3880 kg</b><br>(8,550 lb.)       | 1720 kg<br>(3,790 lb.) |
| 1850-mm (6 ft. 1 in.) Long Arm and Cab             | <b>3810 kg</b><br>(8,400 lb.)           | 1480 kg<br>(3,260 lb.) | <b>3810 kg</b><br>(8,400 lb.)          | 1500 kg<br>(3,310 lb.) | <b>3810 kg</b><br>(8,400 lb.)        | 1680 kg<br>(3,700 lb.) | <b>3810 kg</b><br>(8,400 lb.)       | 1700 kg<br>(3,750 lb.) |
| 1500-mm (4 ft. 11 in.) Standard Arm and Canopy     | <b>3880 kg</b><br>(8,550 lb.)           | 1420 kg<br>(3,130 lb.) | <b>3880 kg</b><br>(8,550 lb.)          | 1420 kg<br>(3,130 lb.) | <b>3880 kg</b><br>(8,550 lb.)        | 1620 kg<br>(3,570 lb.) | <b>3880 kg</b><br>(8,550 lb.)       | 1620 kg<br>(3,570 lb.) |
| 1850-mm (6 ft. 1 in.) Long Arm and Canopy          | <b>3820 kg</b><br>(8,420 lb.)           | 1400 kg<br>(3,090 lb.) | <b>3820 kg</b><br>(8,420 lb.)          | 1400 kg<br>(3,090 lb.) | <b>3820 kg</b><br>(8,420 lb.)        | 1600 kg<br>(3,530 lb.) | <b>3820 kg</b><br>(8,420 lb.)       | 1610 kg<br>(3,550 lb.) |

# Additional equipment

Key: ● Standard ▲ Optional or special

See your John Deere dealer for further information.

| 35G                     | 50G | 60G | Engine   |
|-------------------------|-----|-----|--|
| ●                       | ●   | ●   | Meets EPA Final Tier 4/EU Stage IV emissions   |
| ●                       | ●   | ●   | Auto shutdown  |
| ●                       | ●   | ●   | Engine coolant to -37 deg. C (-34 deg. F)  |
| ●                       | ●   | ●   | Engine preheater   |
| ●                       | ●   | ●   | Fan guard  |
| ●                       | ●   | ●   | Fuel/water separator   |
| ●                       | ●   | ●   | Full-flow oil filter   |
| ●                       | ●   | ●   | Isolation mounted  |
| ●                       | ●   | ●   | Key start switch with electric fuel shutoff  |
| ●                       | ●   | ●   | Single dry-type air filter   |
| <b>Hydraulic System</b> |     |     |  |
| ●                       | ●   | ●   | Auto-idle  |
| ●                       | ●   | ●   | Auxiliary function right-hand pilot-lever control  |
| ●                       | ●   | ●   | Auxiliary hydraulic lines with quick-couplers to end of boom   |
| ●                       | ●   | ●   | Auxiliary return-flow selector valve   |
| ●                       | ●   | ●   | Axial-piston swing motor   |
| ●                       | ●   | ●   | Boom-swing foot control  |
| ●                       | ●   | ●   | Excavator-to-backhoe control pattern change valve  |
| ●                       |     |     | Open center with 2 variable-displacement pumps and 1 fixed-gear pump   |
|                         | ●   | ●   | Closed center load sensing with 1 variable-displacement pump   |
| ●                       | ●   | ●   | Hydraulic pilot-operated controls for boom, arm, bucket, swing, boom swing, blade, travel, and auxiliary functions |
| ●                       | ●   | ●   | Wet-disc swing brake   |
| <b>Undercarriage</b>    |     |     |  |
| ●                       | ●   | ●   | Planetary final drive  |
| ●                       | ●   | ●   | Propel motor shield  |
| ●                       | ●   | ●   | 2-speed axial-piston propel motors   |
| ●                       |     |     | Rubber track, 300 mm (12 in.)  |
|                         | ●   | ●   | Rubber track, 400 mm (16 in.)  |

| 35G                      | 50G | 60G | Undercarriage (continued)   |
|--------------------------|-----|-----|---|
| ▲                        |     |     | Steel track, 300 mm (12 in.) with triple semi-grousers                              |
|                          | ▲   | ▲   | Steel track, 400 mm (16 in.) with triple semi-grousers                              |
| ▲                        |     |     | Rubber crawler pad, 300 mm (12 in.)   |
|                          | ▲   | ▲   | Rubber crawler pad, 400 mm (16 in.)   |
| <b>Upperstructure</b>    |     |     |   |
| ●                        | ●   | ●   | 360-deg. rotation   |
| ●                        |     |     | Counterweight, 540 kg (1,190 lb.)   |
|                          | ●   |     | Counterweight, 700 kg (1,543 lb.)   |
|                          | ●   | ●   | Counterweight, 745 kg (1,642 lb.)   |
| ●                        | ●   | ●   | Hinged service-access doors   |
| ●                        | ●   | ●   | Toolbox   |
| ●                        | ●   | ▲   | ROPS/TOPS/FOPS (canopy)   |
| ▲                        | ▲   | ●   | ROPS/TOPS/FOPS (cab) with air conditioning and heater                               |
| ●                        | ●   | ●   | Vandal protection for service doors, fuel cap, and toolbox                          |
| ●                        | ●   |     | Zero-tail-swing configuration   |
|                          |     | ●   | Reduced-tail-swing configuration  |
| <b>Front Attachments</b> |     |     |   |
| ●                        |     |     | Arm, 1315 mm (4 ft. 4 in.)  |
|                          | ●   |     | Arm, 1380 mm (4 ft. 6 in.)  |
|                          | ●   |     | Arm, 1500 mm (4 ft. 11 in.)   |
| ▲                        |     |     | Long arm, 1715 mm (5 ft. 8 in.), includes additional 240-kg (529 lb.) counterweight |
|                          | ▲   |     | Long arm, 1690 mm (5 ft. 7 in.), includes additional 200-kg (441 lb.) counterweight |
|                          |     | ▲   | Long arm, 1850 mm (6 ft. 1 in.), includes additional 270-kg (595 lb.) counterweight |
| ●                        | ●   | ●   | Articulation hose shield  |
| ●                        |     |     | Backfill blade, 1.74 m (5 ft. 9 in.)  |
|                          | ●   | ●   | Backfill blade, 2.00 m (6 ft. 7 in.)  |
| ▲                        | ▲   | ▲   | Hydraulic angle backfill blade  |
| ●                        |     |     | Boom, 2.465 m (8 ft. 1 in.)   |
|                          | ●   |     | Boom, 2.85 m (9 ft. 4.2 in.)  |
|                          |     | ●   | Boom, 2.965 m (9 ft. 9 in.)   |
| ●                        | ●   | ●   | Mechanical quick-coupler  |

| 35G                       | 50G | 60G | Front Attachments (continued)   |
|---------------------------|-----|-----|---|
| ▲                         | ▲   | ▲   | Augers: Planetary / Chain drive / Bits / Bit adapters   |
| ▲                         | ▲   | ▲   | Clamp   |
| ▲                         | ▲   | ▲   | Hammers: Points / Tools   |
| ▲                         | ▲   | ▲   | Quick-coupler buckets: Bucket teeth / Ditching / Heavy-duty   |
| <b>Operator's Station</b> |     |     |   |
| ●                         | ●   | ●   | Horn  |
| ●                         | ●   | ●   | Hour meter  |
| ●                         | ●   | ●   | Instrumentation lights  |
| ●                         | ●   | ●   | Mode selectors (illuminated): Power mode (1) / Economy mode (1)   |
| ●                         | ●   | ●   | Monitor system: Preheat indicator / Engine oil pressure indicator with alarm / Alternator voltage indicator / Fuel gauge and low-fuel-level indicator / Engine coolant temperature gauge and engine coolant temperature indicator with alarm / Hour meter / Work lights indicator |
| ●                         | ●   | ●   | Motion alarm with cancel switch   |
| ●                         | ●   | ●   | Work lights switch  |
| ●                         | ●   | ●   | Propel levers and foldable pedals   |
| ●                         | ●   | ●   | 2 travel speeds with automatic shifting   |
| ●                         | ●   | ●   | Seat belt, 51 mm (2 in.), retractable   |
| ▲                         | ▲   | ▲   | Seat belt, 76 mm (3 in.), retractable   |
| ●                         | ●   | ▲   | Vinyl seat with fore/aft adjustment   |
| ▲                         | ▲   | ●   | Suspension seat (cloth)   |
| ▲                         | ▲   | ▲   | Front screen  |
| ▲                         | ▲   | ▲   | Rear secondary exit kit   |
| <b>Electrical</b>         |     |     |   |
| ●                         | ●   | ●   | 12-volt accessory outlet  |
| ●                         | ●   | ●   | Alternator, 55 amp  |
| ●                         | ●   | ●   | Low-maintenance battery   |
| ●                         | ●   | ●   | Blade-type multi-fused circuits   |
| ●                         | ●   | ●   | Positive-terminal battery covers  |
| <b>Lights</b>             |     |     |   |
| ●                         | ●   | ●   | Work lights: Halogen / 1 mounted on operator's station / 1 mounted on boom  |

While general information, pictures, and descriptions are provided, some illustrations and text may include product options and accessories NOT AVAILABLE in all regions, and in some countries products and accessories may require modifications or additions to ensure compliance with the local regulations of those countries.

Net engine power is with standard equipment including air cleaner, exhaust system, alternator, and cooling fan at test conditions per ISO 9249. These machines are not equipped with spark-arrestor mufflers. Usage in forestry applications is not recommended. Specifications and design subject to change without notice. Wherever applicable, specifications are in accordance with SAE standards. Except where otherwise noted, these specifications are based on units with standard arms, full fuel tanks, and 79-kg (175 lb.) operators; a 35G canopy unit with 610-mm (24 in.), 0.11-m<sup>3</sup> (4.0 cu. ft.) bucket, 300-mm (12 in.) rubber track, and 540-kg (1,190 lb.) counterweight; a 50G canopy unit with 610-mm (24 in.), 0.16-m<sup>3</sup> (5.7 cu. ft.) bucket, 400-mm (16 in.) rubber track, and 700-kg (1,543 lb.) counterweight; and a 60G cab unit with 0.19-m<sup>3</sup> (6.8 cu. ft.) bucket, 400-mm (16 in.) rubber track, and 745-kg (1,642 lb.) counterweight.

